

Product sheet

Material: 662200100




EAN 13: 8414162008460

Adjustable Pipe threader 4" - 662

Presentation: Box

Shipping Unit: 1



No. BSPT.	No. NPT			kg.	
662200100	662300000	1.1/2" - 4"	3	28,4	1
662200300	662300100	2.1/2" - 4"	2	27,2	1
662200500		1.1/2" - 3"	3	27,5	1
Juego de peines / Die set.					
6621D2200	6621N2200	1.1/2" - 2"			1
6622D2200	6622N2200	2.1/2" - 3"			1
6623D2200	6623N2200	3.1/2" - 4"			1

Product description:

Double ratchet system (left and right) and easy centering of the pipe, assuring a perfect threads. Open body tipe, easy discharge of chips

Preparation to threading operation

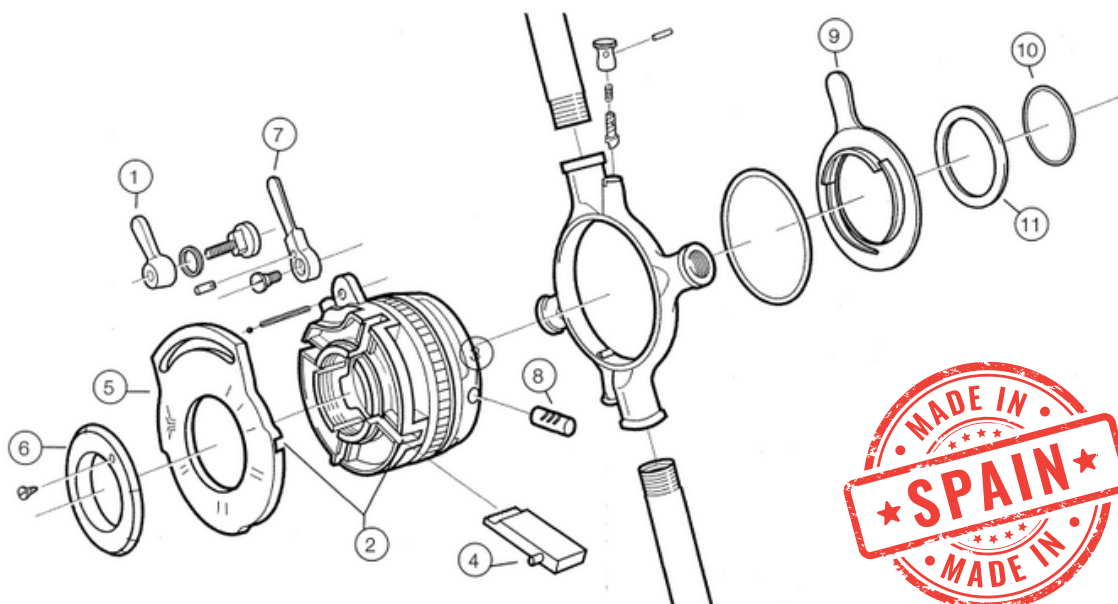
To thread a pipe, select first the dies set corresponding to the pipe size (for instance, for a 1.1/2" pipe, select 1.1/2"-2" set).

How to fit the dies set

- Loosen lever (1)
 - Align the lateral hailes (2) of the upper plate with those of the body (3).
 - Introduce in each hale the appropriate die (the die pin (4) upright), i.e.
- Hale 1 = Die 1, and so on till the four dies are introduced at its place.

- Turn the upper plate (5) to select the threading size, i.e., for threading 1.1/2" pipe the mark showing 1.1/2" in the upper plate (6) must be aligned with 1.1/2" mark in the flange (6).

- Fix lever (7) and tighten lever (5).
 - Fasten the pipe to a vise to have it securely tight during the threading operation.
 - Place the adjustable threader by introducing the pipe through the rear part of the threader (guide)
 - Adjust the guide bolts (8) to the diarneter of the pipe turning the guide cam plate (9).
- The guide bolts (8) should not press the pipe.



Certifications:

ISO 9000
ISO 14001

